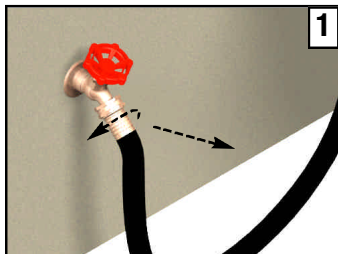
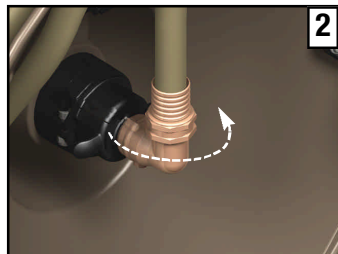


Plumbing Replacement for TRITON Garden Hose Reels

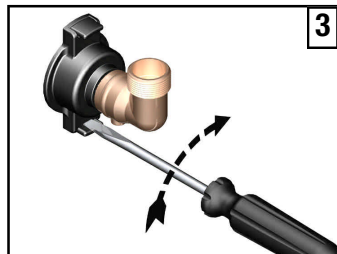
Remove old swivel and inlet hose



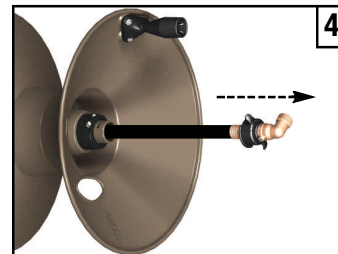
1 Disconnect inlet hose from faucet.



2 Disconnect hose from swivel.

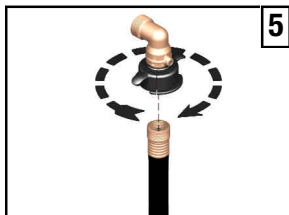


3 Disengage swivel from reel.

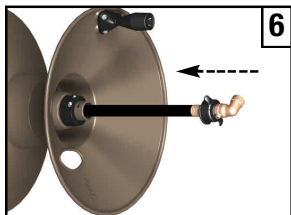


4 Remove assembly from reel.

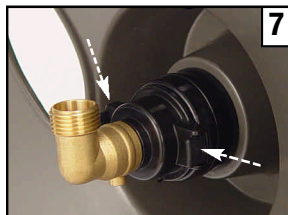
Install new swivel and/or inlet hose



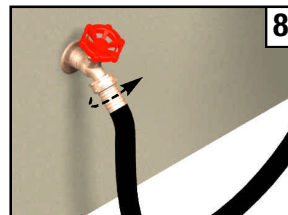
5 Attach swivel to inlet hose.



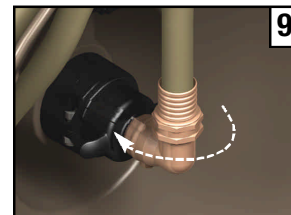
6 Feed inlet hose through axle.



7 Engage swivel tabs.



8 Attach inlet hose to faucet.



9 Attach hose to swivel.