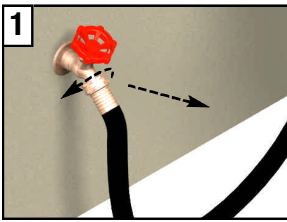
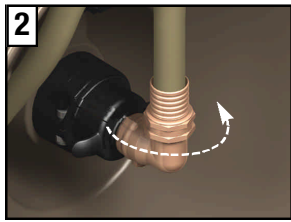


Winterization of TRITON Garden Hose Reels

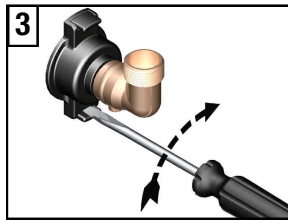
STEP 1 - Remove water from inlet hose & brass swivel



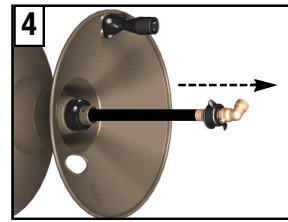
1 Disconnect inlet hose from faucet.



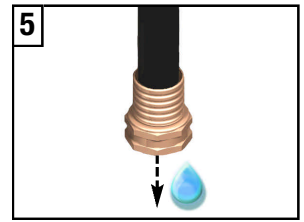
2 Disconnect garden hose from brass swivel.



3 Disengage swivel from reel.

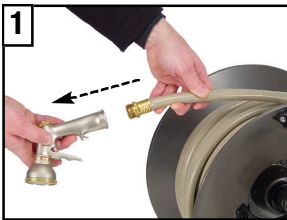


4 Remove inlet hose & swivel from hose reel.



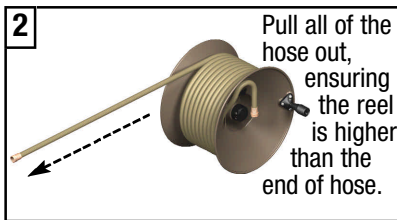
5 Drain water from assembly.

STEP 2 - Remove water from garden hose

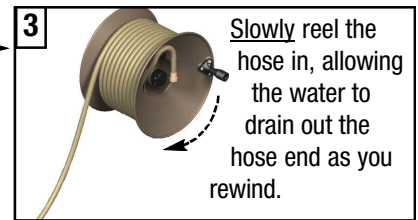


1 Remove any watering attachments from the hose.

Option 1
Gravity
Drainage



2 Pull all of the hose out, ensuring the reel is higher than the end of hose.



3 Slowly reel the hose in, allowing the water to drain out the hose end as you rewind.

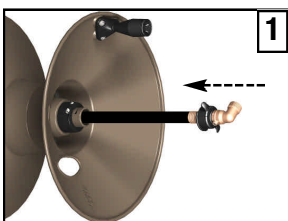
Option 2
Compressed
Air Drainage



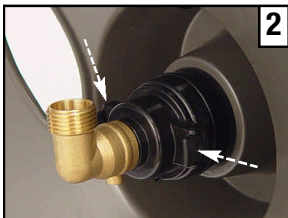
2 Insert a blowgun into hose and keeping a tight seal, blow water out the opposite end of the hose.

Step 3 - Storage options

Portable Reels



1 Re-insert inlet hose & swivel assembly onto reel.



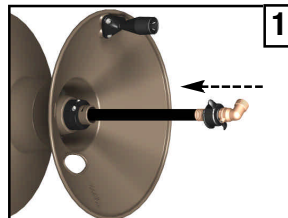
2 Engage swivel tabs.

3 Wheel to desired storage location.

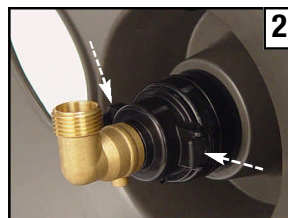
Wall Mount Reels

Option A

Leave Entire Reel on Wall



1 Re-insert inlet hose & swivel assembly onto reel.

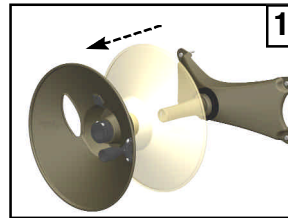


2 Engage swivel tabs.

Reel is made of corrosion proof aluminum and stainless steel.

Option B

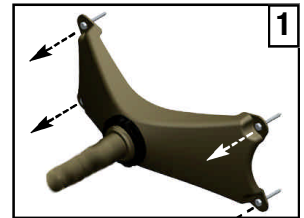
Leave Wall Plate/Axle on Wall



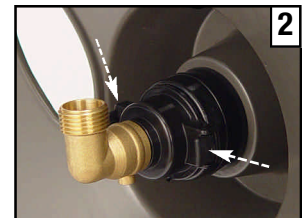
1 Slide reel assembly off axle and carry it and the inlet hose/swivel assembly to your desired storage location.

Option C

Remove Entire Reel from Wall



1 After removing the reel assembly from the axle, (see Option B), remove wall plate.



2 Place the reel assembly back onto axle, re-insert inlet hose/swivel assembly, re-engage swivel tabs and carry to storage.